

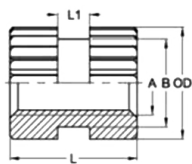
Вставка закладная MoldFix

Вид F

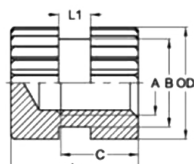
Тип O / C / PS

С внутренней и внешней резьбой

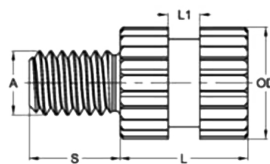
- доступна в разных длинах
- для использования в качестве закладной в термопластах и реактопластах
- для сквозного отверстия, для глухого отверстия и в виде шпильки



Тип O



Тип C



Тип PS

Метрические вставки MoldFix, вид F, типы O и C, открытая и закрытая, внутренняя резьба, размеры в мм

| Артикул Тип O, латунь* | Артикул Тип C, латунь* | A | L | SW | ПР-НЕ (проход- непроход) | 0/-0.01 Штифт | L** | | | | | | | | | | | | | |
|------------------------------|------------------------------|------|------|------|--------------------------------|------------------|------------|------------|------------|------------|------------|------------|-------------|-------------|------|------|------|------|------|------|
| MFO2020 | MFC2020 | M2 | 4,0 | 3,0 | 1,610/1,679 | 1,610 | 2,0 | 3,0 | 4,0 | 5,0 | 6,0 | - | - | - | - | - | - | - | - | |
| MFO2530 | MFC2530 | M2,5 | 4,5 | 3,5 | 2,058/2,138 | 2,058 | - | 3,0 | 4,0 | 5,0 | 6,0 | 8,0 | - | - | - | - | - | - | - | |
| MFO3030 | MFC3030 | M3 | 5,0 | 4,0 | 2,500/2,590 | 2,500 | - | 3,0 | 4,0 | 5,0 | 6,0 | 8,0 | 10,0 | - | - | - | - | - | - | |
| MFO4040 | MFC4040 | M4 | 6,0 | 5,0 | 3,340/3,420 | 3,340 | - | - | 4,0 | 5,0 | 6,0 | 8,0 | 10,0 | 12,0 | - | - | - | - | - | |
| MFO5050 | MFC5050 | M5 | 8,0 | 7,0 | 4,200/4,300 | 4,200 | - | - | - | 5,0 | 6,0 | 8,0 | 10,0 | 12,0 | 14,0 | 16,0 | - | - | - | |
| MFO6060 | MFC6060 | M6 | 10,0 | 9,0 | 5,050/5,150 | 5,050 | - | - | - | - | 6,0 | 8,0 | 10,0 | 12,0 | 14,0 | 16,0 | 18,0 | - | - | |
| MFO8080 | MFC8080 | M8 | 12,0 | 10,0 | 6,810/6,912 | 6,810 | - | - | - | - | - | 8,0 | 10,0 | 12,0 | 14,0 | 16,0 | 18,0 | 20,0 | 25,0 | |
| MFO1010 | MFC1010 | M10 | 15,0 | 13,0 | 8,500/8,650 | 8,500 | - | - | - | - | - | - | 10,0 | 12,0 | 14,0 | 16,0 | 18,0 | 20,0 | 25,0 | 30,0 |
| MFO1212 | MFC1212 | M12 | 18,0 | 16,0 | 10,250/10,400 | 10,250 | - | - | - | - | - | - | - | 12,0 | 14,0 | 16,0 | 18,0 | 20,0 | 25,0 | 30,0 |
| Длина резьбы, C min | | | | | | | - | - | - | - | 3,0 | 4,5 | 6,0 | 8,0 | 10,0 | 11,0 | 12,0 | 14,0 | 19,0 | 20,0 |
| Длина насечки, L1 | | | | | | | 0,6 | 0,8 | 1,2 | 1,2 | 2,0 | 2,5 | 3,0 | 4,0 | 4,5 | 5,0 | 6,0 | 6,5 | 8,0 | 8,0 |

Метрические вставки MoldFix, вид K, тип PS, без фланца, внешняя резьба, размеры в мм

| Артикул Тип PS, латунь* | A | L** | | | | | | | | | | | | S** | | | | | | | | | | | |
|-------------------------------|------|------------|------------|------------|------------|------------|------------|-------------|-------------|------|------|------|------|------|------|------------|-----|-----|------|------|------|------|------|------|------|
| MFPS202050 | M2 | 2,0 | 3,0 | 4,0 | 5,0 | 6,0 | - | - | - | - | - | - | - | - | - | 5,0 | 6,0 | 8,0 | 10,0 | 12,0 | 14,0 | 16,0 | 18,0 | 20,0 | 25,0 |
| MFPS253050 | M2,5 | - | 3,0 | 4,0 | 5,0 | 6,0 | 8,0 | - | - | - | - | - | - | - | - | 5,0 | 6,0 | 8,0 | 10,0 | 12,0 | 14,0 | 16,0 | 18,0 | 20,0 | 25,0 |
| MFPS303050 | M3 | - | 3,0 | 4,0 | 5,0 | 6,0 | 8,0 | 10,0 | - | - | - | - | - | - | - | 5,0 | 6,0 | 8,0 | 10,0 | 12,0 | 14,0 | 16,0 | 18,0 | 20,0 | 25,0 |
| MFPS404050 | M4 | - | - | 4,0 | 5,0 | 6,0 | 8,0 | 10,0 | 12,0 | - | - | - | - | - | - | 5,0 | 6,0 | 8,0 | 10,0 | 12,0 | 14,0 | 16,0 | 18,0 | 20,0 | 25,0 |
| MFPS505050 | M5 | - | - | - | 5,0 | 6,0 | 8,0 | 10,0 | 12,0 | 14,0 | 16,0 | - | - | - | - | 5,0 | 6,0 | 8,0 | 10,0 | 12,0 | 14,0 | 16,0 | 18,0 | 20,0 | 25,0 |
| MFPS606050 | M6 | - | - | - | - | 6,0 | 8,0 | 10,0 | 12,0 | 14,0 | 16,0 | 18,0 | - | - | - | 5,0 | 6,0 | 8,0 | 10,0 | 12,0 | 14,0 | 16,0 | 18,0 | 20,0 | 25,0 |
| MFPS808050 | M8 | - | - | - | - | - | 8,0 | 10,0 | 12,0 | 14,0 | 16,0 | 18,0 | 20,0 | 25,0 | - | 5,0 | 6,0 | 8,0 | 10,0 | 12,0 | 14,0 | 16,0 | 18,0 | 20,0 | 25,0 |
| MFPS101050 | M10 | - | - | - | - | - | - | 10,0 | 12,0 | 14,0 | 16,0 | 18,0 | 20,0 | 25,0 | 30,0 | 5,0 | 6,0 | 8,0 | 10,0 | 12,0 | 14,0 | 16,0 | 18,0 | 20,0 | 25,0 |
| MFPS121250 | M12 | - | - | - | - | - | - | - | 12,0 | 14,0 | 16,0 | 18,0 | 20,0 | 25,0 | 30,0 | 5,0 | 6,0 | 8,0 | 10,0 | 12,0 | 14,0 | 16,0 | 18,0 | 20,0 | 25,0 |

* возможно изготовление из нержавеющей стали и алюминия.

** указаны артикулы для вставок и шпилек с первым значением длины (выделены жирным шрифтом).

Как добавлять в артикул другие длины вставок и шпилек:

В случае одной цифры перед запятой, укажите ее и цифру после запятой, убрав запятую (например, 5,1 мм = 51; 4,0 мм = 40).

В случае двух цифр перед запятой укажите только их (например, 12,7 мм=12).

Пример 1: в таблице указан артикул XYZ2557 - вставка с внутренней резьбой M2,5, длина вставки 5,7 мм

Вы хотите заказать шпильку M2,5, но с длиной вставки 4 мм.

Тогда потребный артикул будет XYZ2540.

Пример 2: в таблице указан артикул XYZX204050 - шпилька с наружной резьбой M2, длина вставки 4 мм, длина шпильки 5 мм.

Вы хотите заказать шпильку M2, но с длиной вставки 2,5 мм и длиной шпильки 6 мм.

Тогда потребный артикул будет XYZX202560.